

ROAD INDEX

A	I	ROCK CREEK RD.	A1
	J	JOANN DRIVE	C-3
B	K	BURROWS RD. B1-F1	KILE ROAD A2-A6
			SUN ROAD D5
C	L	CLAY STREET B1-C6	LEGGETT RD. B1-F2
			T
D	M	DEWEY ROAD C1	MADISON RD. D1-D6
			MORGAN RD. F1-F3
			MURPHY RD. F1
			U
E			V
			N
F			W
			WHITNEY RD. D5-F5
			WOODHILL DR. B1
			O
G		G.A.R. HIGHWAY A4-F4	X
			D
			PLANK ROAD B1-F6
			Y
H		HART ROAD A2-E2	
		HAUTALA ROAD C6	
			Q
			Z

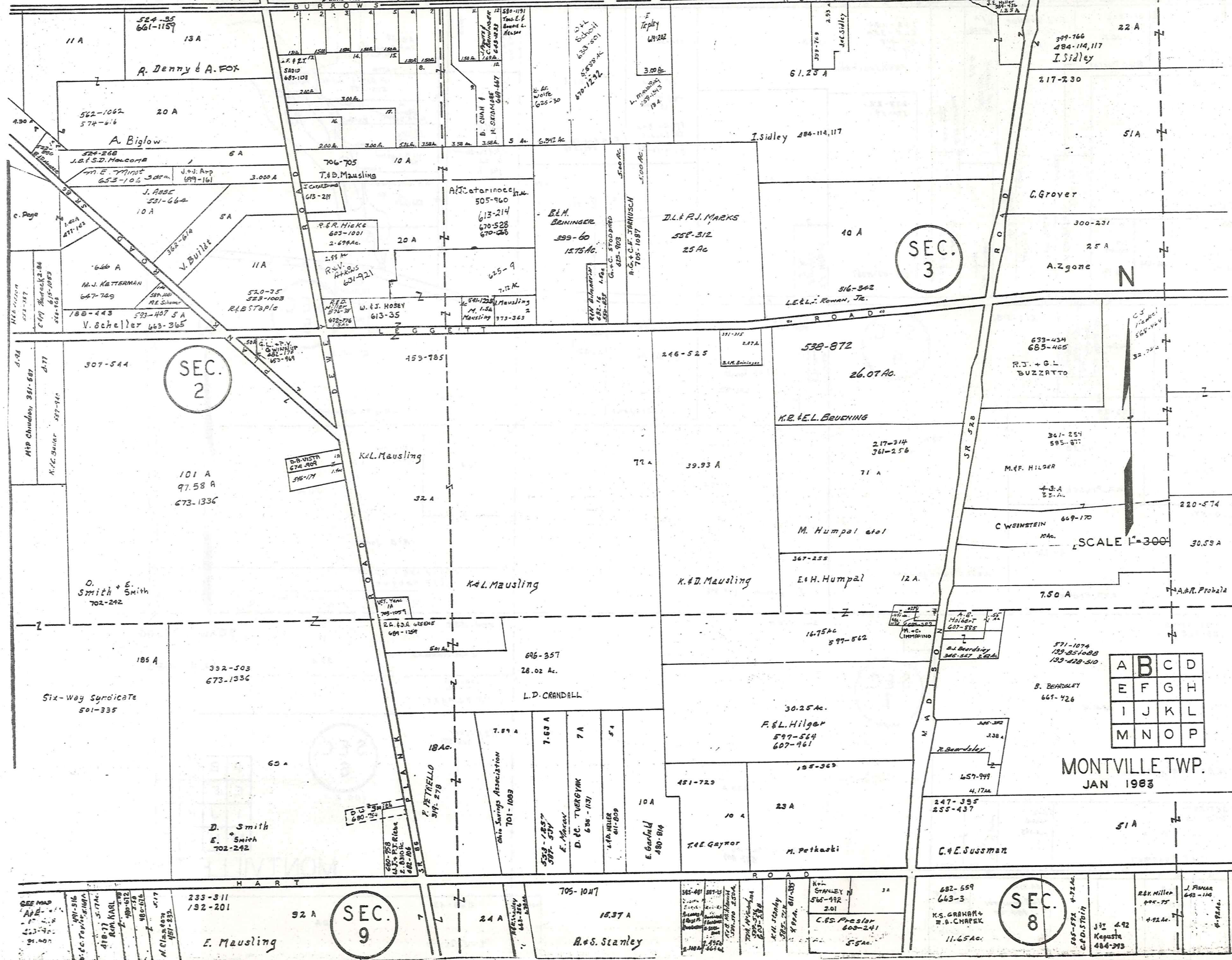
- ① LEDGEMONT SCHOOL
- ② COMMUNITY CHURCH
- ③ MONTVILLE METHODIST CHURCH
- ④ MONTVILLE CEMETERY
- ⑤ MONTVILLE VOL. FIRE DEPT.
- ⑥ UNITED STATES POST OFFICE
- ⑦ MONTVILLE TOWN HALL
- ⑧ STATE HIGHWAY GARAGE (SUB STATION)
- ⑨ MONTVILLE COMMUNITY CENTER

MONTVILLE TOWNSHIP

SCALE: 1" = 2000'
 ROBERTE PHILLIPS
 GAUGA COUNTY ENGINEER

--- UNPAVED ROADS
 --- PAVED ROADS
 --- TOWNSHIP LINE
 --- COUNTY LINE

THOMPSON TOWNSHIP



SEC. 3

SEC. 2

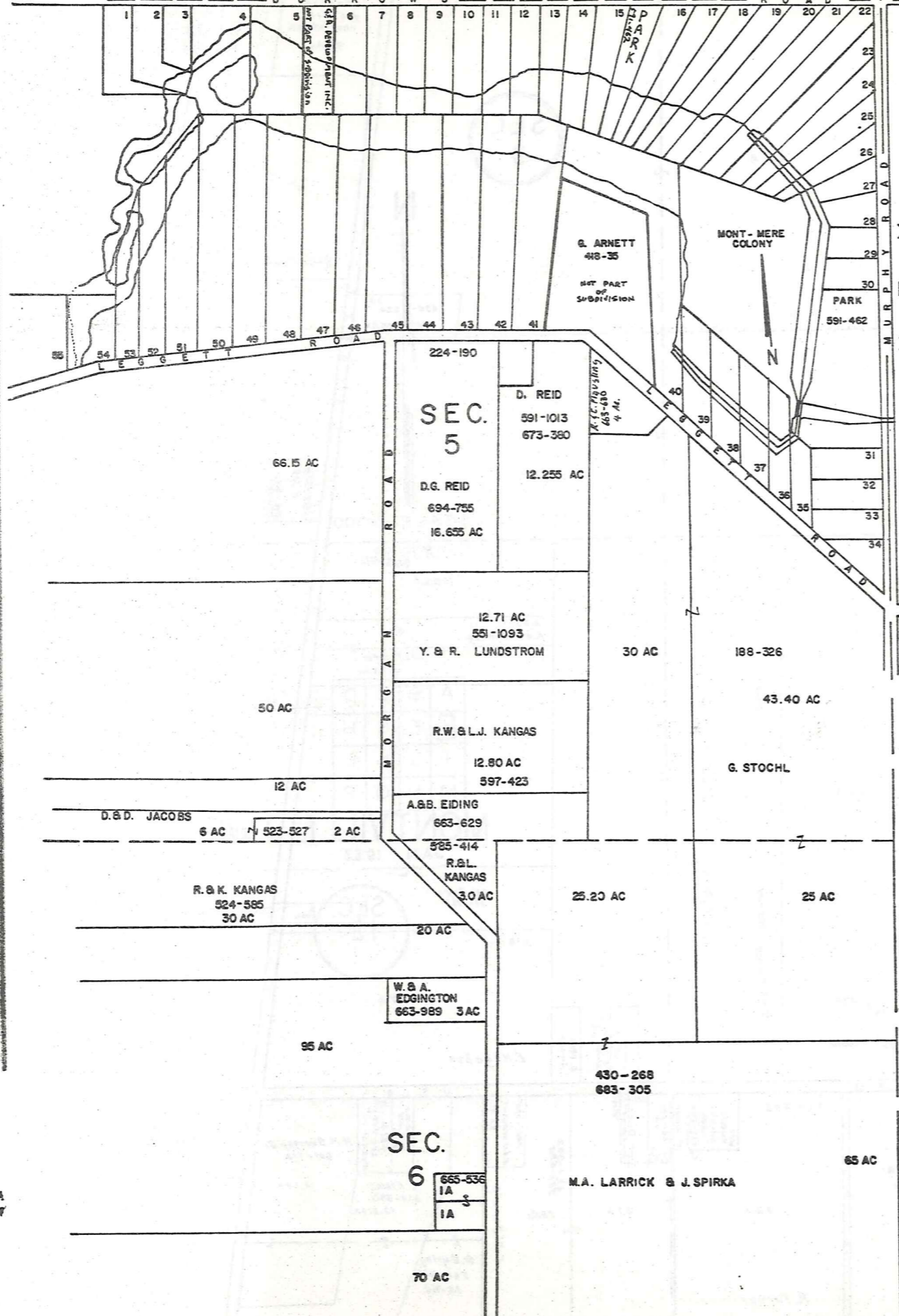
SEC. 9

SEC. 8

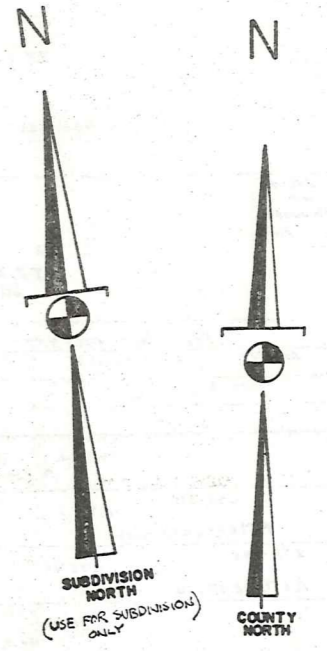
A	B	C	D
E	F	G	H
I	J	K	L
M	N	O	P

MONTVILLE TWP. JAN 1983

THOMPSON TOWNSHIP

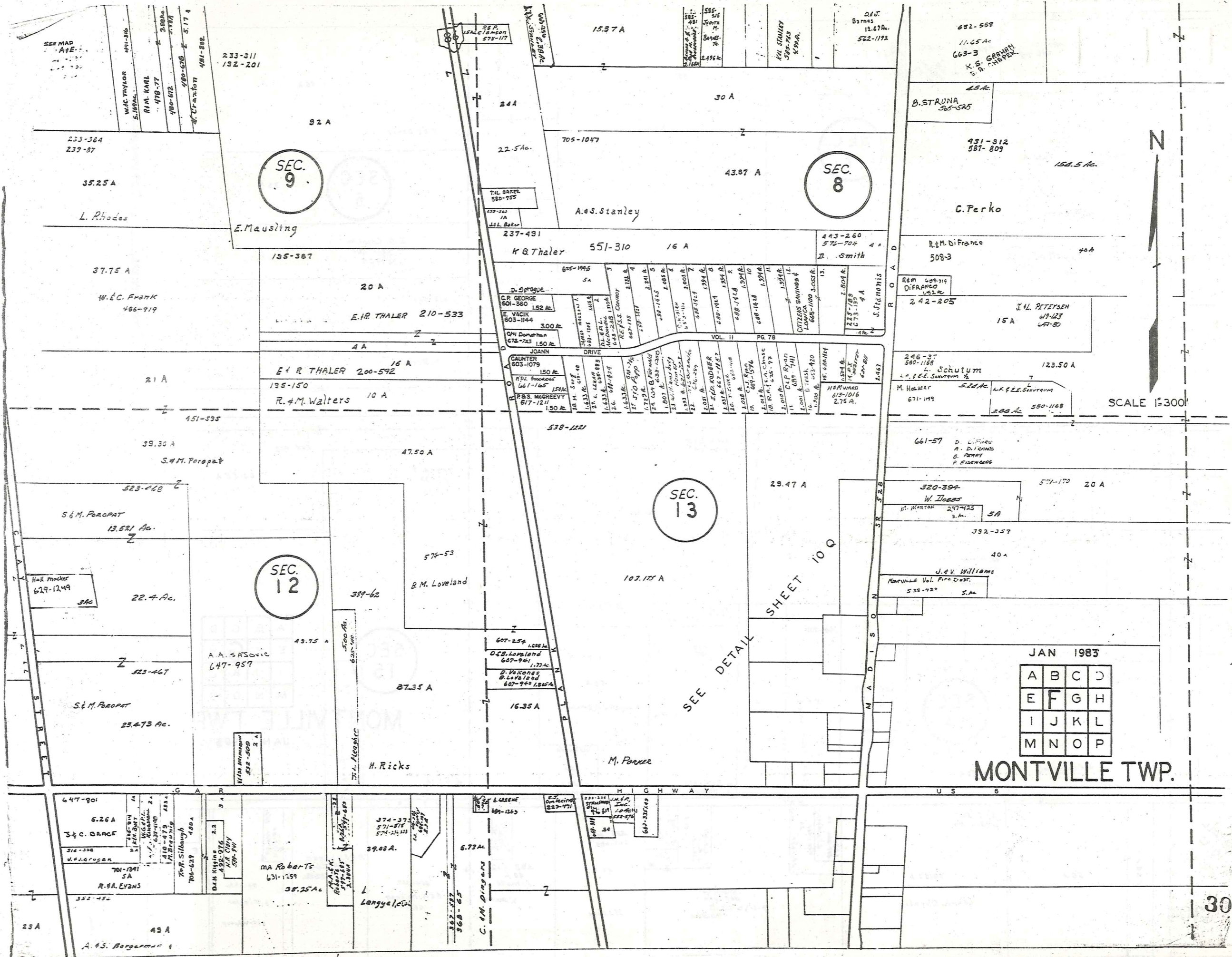


MONT-MERE COLONY		
SUBDIVISION ONE - Vol 9-Pg 94		
1		
2	J.E.L. MURRAY	607-363
3	M.P. BAUMGARTNER	653-1017
4	M.B. NUTTIN	605-892
5	G.J. SUBACK	783-1020
6	R.T. HANKE	700-1715
7	J.G. TANNER	757-582
8	R.Z. TANTON	671-242
9	E.P. VANDEL	578-728
10	J.B. CUBANIGER	576-664
11	S.C. LIPKA	677-347
12	C.C. LIPKA	672-151
13	L.L. SURIANO	431-233
14	J.S. VERNON	633-560
15	T.D. SCOUTER	582-917
16	W.L. THOMSON	582-776
17	A. GONKOWSKI	573-827
18	R.B. UMBEL	581-059
19	J. JELMIG	653-601
20	G.E. GROJDE	570-45
21	T.W. BROWN (Pioneer)	703-1387
22	R.S. AMMON	671-1217
23	L.W. NICKMAN	702-580
24	R.D. GRANLIN	565-372
25		
26	T.D. BRUNING	552-32
27	G. MORZEGROWSKI	633-1037
28	J.L. AMMON	640-1058
29	R.E. STRONG	603-1466
30	T.P. STEPHAN	678-2177
31	D. KINGSLAND	678-811
32	A.S. M. AUDEY	643-714
33	J.C. GONKOWSKI	572-498
34	R. HAYTER E.P. Co.	550-720
35	A.P. PALOMAS	677-367
36	K. PALOMAS	677-367
37	R.E. P. BRANT	625-123
38	J.F. KOSKINEN	632-877
39	A.S. KOSKINEN	628-485
40	Steve Roper	577-427
41		
42	D.E. FERBAT	638-1209
43	R.M. KOPP	577-372
44	H.W. SARLES	573-1206
45	O. TOGSTER	609-377
46	H.W. "	"
47	O.L. WALT	708-114
48	J.P. ORRILL	698-584
49	P.L. Drees	571-227
50	R.L. NICHOLS	679-285
51	D.E. JONES	578-1214
52	R.B. Temple	579-126
53	J.A. PATTERSON	677-253
54	T.O. CALVATTE	578-728
55	C.P. WILKES	621-1042



SCALE: 1" = 300'
JAN. 1, 1983

A	B	C	D
E	F	G	H
I	J	K	L
M	N	O	P



263-43

SEC. 6

220-374

65 A

M. A. LARRICK +
J. Spirka

70 A

R. E. Davis

671-1191

40 A

35 A

RAK
GARNEY
654-1278
SAC.

J.D. Colandine
631-1278
679-5

431-607

LFB PNIENSKI

34 A

40 A

270-465
582-84

G.P. Heller

T.B. HERTNA

418-393

D.P. PARSONS
653-189 2004

303AC

50 A

P. KIBLER 609-825

M.L. Mayley 574-595

G. Brown

F.L. RICHARDS
605-199

8.50 A

48.44 A

G.E.M. Tresk
463-268
574-857
601-372
647-252

11.44 A

672-1671

L.F. Tresk

H. Piepmann
617-921

258Ac.

ANNA Marie + Joseph Majka
1/4/03 25.1924Ac.

617-166

55.81 Ac.

H.E. PIERMAN
617-919 258Ac.

C. PIERMAN
617-923 258Ac.

Josephine Anna + Harold Edward Hoffman
1/4/03

H.D. + M.W. STOLTZ
674-160
626Ac.

25.1924 Ac. 673-101

702
Sinkovac
574-624

17.34 Ac.

613-2297

L. Pharo
706-578

8.7 Ac.

74-622

663-707

469-728

J.L. Masorella
5.5A

J.L. Masorella
667-440
1.093 A

819 Johnson
480-397
2 A

21-658

488-577

228-828 et al.

1.17 A

DL STEPAUSKY
I. Bosse
672-758

234-318

5A
469-778
J.A. Majka

237-458

M.J. Dombrowski

10 A

43A

15 A

15 A

3.25 A

206-442

33.75 A

20 A

M. Lankford

D. Geistman

31.27 A

33 A

J. Tresk et al.

C. Meiss

M.B. Crisovic
589-178

576-267

288 Ac.

309-1012

61.76 A

P. Barardinelli

312-457-6
637-959

12 A

50 A

W. MARONS

367-417
352-345

29.71 A

S. Zadnik

29

R. Kuczek
448-291, 476
472-571

SEC. 15

C O U N T Y
A S H T A B U L A

N

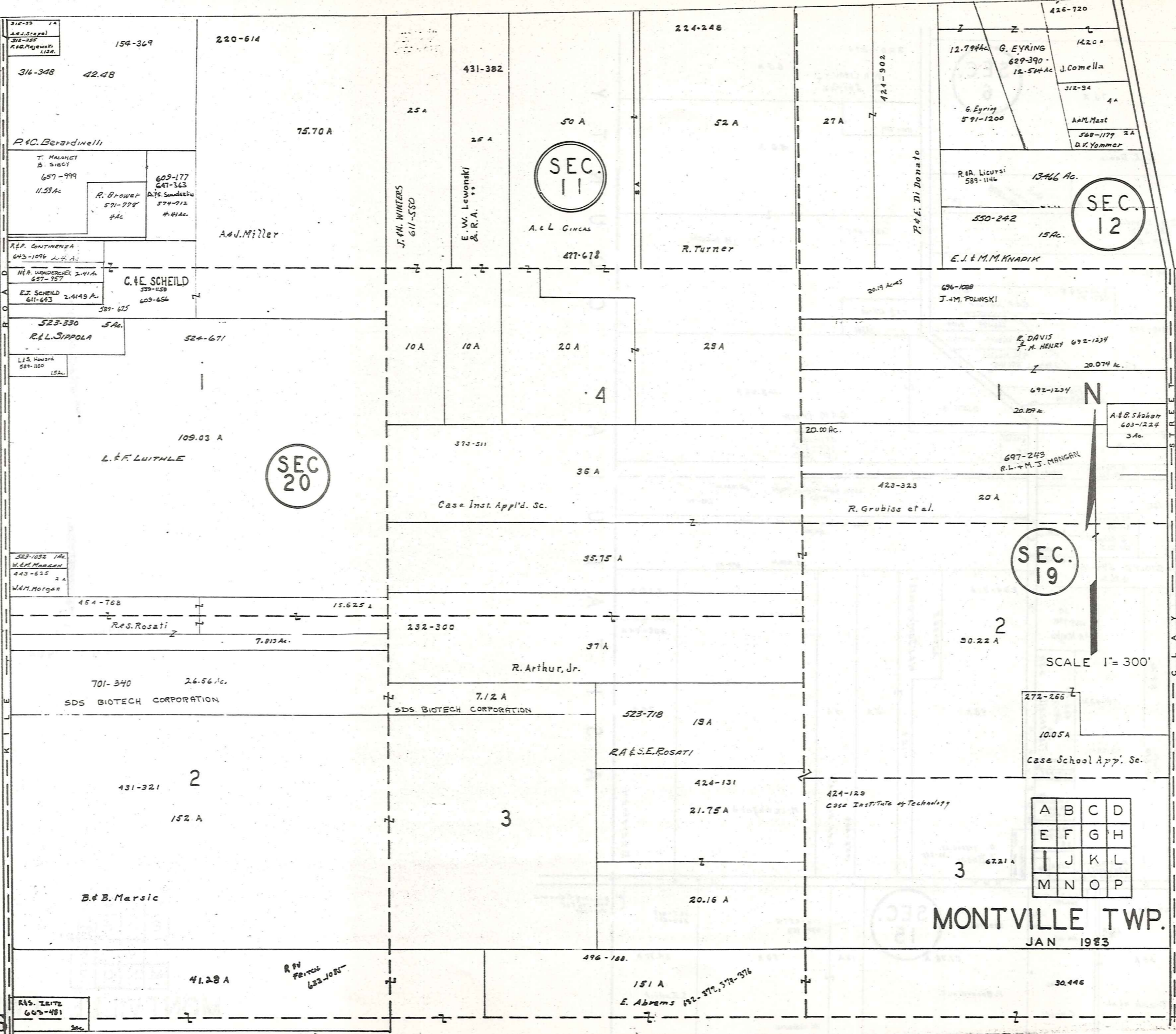
SCALE 1" = 300'

JAN 1982

A	B	C	D
E	F	G	H
I	J	K	L
M	N	O	P

MONTVILLE TWP
305

H A M B D E N T O W N S H I P



A	B	C	D
E	F	G	H
I	J	K	L
M	N	O	P

MONTVILLE TWP.
JAN 1983

SEC. 12

SEC. 13

SEC. 18



SCALE 1" = 300'

JAN 1968

A	B	C	D
E	F	G	H
I	J	K	L
M	N	O	P

MONTVILLE TWP.

424-685

E. Mills

232-600

K. Roberts
597-657

38.25 A

39.08 A.

L. Lengyel

117.75 A

6

J. V. Rihz

295-478

SEC. 19

117.85 A

5

D. J. Hale

F. Stepic
593-312

30.699 Ac.

593-314
663-841

30.699 Ac.

J. A. Stepic

4

286-194

M. Rabatin
36 Ac.

J. M. Rabatin
701-795

617-307 24
618-235
J. M. Rabatin
296-566
404-331
404-450 24
J. M. Rabatin

M. E. Rogers

M. J. Mihalacki

469-93

22.422 A

E. K. MOORE
588-800 237 Ac.

R. S. Tomblin

538-1340

J. J. Pope

701-1055

4.765 Ac.

J. G. & H. C. Wick

637-1205

4.434 A

N. K. Phillips

597-131

577-245

4.144 Ac.

P. C. Burnett

589-425

2.34 Ac.

491-324

578-837

M. M. & D. J. Russin

13.550 Ac.

M. R. J. Zwolenik

555-797

E. J. Hamen

470-810

10 A

653-706

F. J. Kastigar

678-964

J. V. Ombien

212-374

663-780

671-724

D. A. J. Heil

193-435

A. Loesey et al.

253-370

691-189

M. E. Rogers

James J. Mihalacki
574-1277
578-815

Joseph & Mary Lou Mihalacki
574-1275

M. C. Wozniak
523-878

E. K. Zielinski
437 Ac.
699-390
611-392

J. H. Claus Sr.
593-1055
597-65

J. C. Rusin
675-1152

R. R. Yunas
570 Ac.

J. L. Sikora
611-403
1-502

F. J. Kastigar - 678-964
J. V. Ombien

212-374
663-780
671-724

D. A. J. Heil

A. Loesey et al.

253-370
691-189

M. E. Rogers

M. J. Mihalacki
469-93
22.422 A

E. K. MOORE
588-800 237 Ac.

R. S. Tomblin
538-1340

J. J. Pope
701-1055
4.765 Ac.

J. G. & H. C. Wick
637-1205
4.434 A

N. K. Phillips
597-131
577-245
4.144 Ac.

P. C. Burnett
589-425
2.34 Ac.

491-324
578-837
M. M. & D. J. Russin
13.550 Ac.

M. R. J. Zwolenik
555-797

E. J. Hamen
470-810
10 A

653-706

F. J. Kastigar - 678-964
J. V. Ombien

212-374
663-780
671-724

D. A. J. Heil

A. Loesey et al.

253-370
691-189

M. E. Rogers

M. J. Mihalacki
469-93
22.422 A

E. K. MOORE
588-800 237 Ac.

R. S. Tomblin
538-1340

J. J. Pope
701-1055
4.765 Ac.

J. G. & H. C. Wick
637-1205
4.434 A

N. K. Phillips
597-131
577-245
4.144 Ac.

P. C. Burnett
589-425
2.34 Ac.

491-324
578-837
M. M. & D. J. Russin
13.550 Ac.

M. R. J. Zwolenik
555-797

E. J. Hamen
470-810
10 A

653-706

F. J. Kastigar - 678-964
J. V. Ombien

212-374
663-780
671-724

D. A. J. Heil

A. Loesey et al.

253-370
691-189

M. E. Rogers

M. J. Mihalacki
469-93
22.422 A

E. K. MOORE
588-800 237 Ac.

R. S. Tomblin
538-1340

J. J. Pope
701-1055
4.765 Ac.

J. G. & H. C. Wick
637-1205
4.434 A

N. K. Phillips
597-131
577-245
4.144 Ac.

P. C. Burnett
589-425
2.34 Ac.

491-324
578-837
M. M. & D. J. Russin
13.550 Ac.

M. R. J. Zwolenik
555-797

E. J. Hamen
470-810
10 A

653-706

F. J. Kastigar - 678-964
J. V. Ombien

212-374
663-780
671-724

D. A. J. Heil

A. Loesey et al.

253-370
691-189

M. E. Rogers

M. J. Mihalacki
469-93
22.422 A

E. K. MOORE
588-800 237 Ac.

R. S. Tomblin
538-1340

J. J. Pope
701-1055
4.765 Ac.

J. G. & H. C. Wick
637-1205
4.434 A

N. K. Phillips
597-131
577-245
4.144 Ac.

P. C. Burnett
589-425
2.34 Ac.

491-324
578-837
M. M. & D. J. Russin
13.550 Ac.

M. R. J. Zwolenik
555-797

E. J. Hamen
470-810
10 A

653-706

F. J. Kastigar - 678-964
J. V. Ombien

212-374
663-780
671-724

D. A. J. Heil

A. Loesey et al.

253-370
691-189

M. E. Rogers

M. J. Mihalacki
469-93
22.422 A

E. K. MOORE
588-800 237 Ac.

R. S. Tomblin
538-1340

J. J. Pope
701-1055
4.765 Ac.

J. G. & H. C. Wick
637-1205
4.434 A

N. K. Phillips
597-131
577-245
4.144 Ac.

P. C. Burnett
589-425
2.34 Ac.

491-324
578-837
M. M. & D. J. Russin
13.550 Ac.

M. R. J. Zwolenik
555-797

E. J. Hamen
470-810
10 A

653-706

F. J. Kastigar - 678-964
J. V. Ombien

212-374
663-780
671-724

D. A. J. Heil

A. Loesey et al.

253-370
691-189

M. E. Rogers

M. J. Mihalacki
469-93
22.422 A

E. K. MOORE
588-800 237 Ac.

R. S. Tomblin
538-1340

J. J. Pope
701-1055
4.765 Ac.

J. G. & H. C. Wick
637-1205
4.434 A

N. K. Phillips
597-131
577-245
4.144 Ac.

P. C. Burnett
589-425
2.34 Ac.

491-324
578-837
M. M. & D. J. Russin
13.550 Ac.

M. R. J. Zwolenik
555-797

E. J. Hamen
470-810
10 A

653-706

F. J. Kastigar - 678-964
J. V. Ombien

212-374
663-780
671-724

D. A. J. Heil

A. Loesey et al.

253-370
691-189

M. E. Rogers

M. J. Mihalacki
469-93
22.422 A

E. K. MOORE
588-800 237 Ac.

R. S. Tomblin
538-1340

J. J. Pope
701-1055
4.765 Ac.

J. G. & H. C. Wick
637-1205
4.434 A

N. K. Phillips
597-131
577-245
4.144 Ac.

P. C. Burnett
589-425
2.34 Ac.

491-324
578-837
M. M. & D. J. Russin
13.550 Ac.

M. R. J. Zwolenik
555-797

E. J. Hamen
470-810
10 A

653-706

F. J. Kastigar - 678-964
J. V. Ombien

212-374
663-780
671-724

D. A. J. Heil

A. Loesey et al.

253-370
691-189

M. E. Rogers

M. J. Mihalacki
469-93
22.422 A

E. K. MOORE
588-800 237 Ac.

R. S. Tomblin
538-1340

J. J. Pope
701-1055
4.765 Ac.

J. G. & H. C. Wick
637-1205
4.434 A

N. K. Phillips
597-131
577-245
4.144 Ac.

P. C. Burnett
589-425
2.34 Ac.

491-324
578-837
M. M. & D. J. Russin
13.550 Ac.

M. R. J. Zwolenik
555-797

E. J. Hamen
470-810
10 A

653-706

F. J. Kastigar - 678-964
J. V. Ombien

212-374
663-780
671-724

D. A. J. Heil

A. Loesey et al.

253-370
691-189

M. E. Rogers

M. J. Mihalacki
469-93
22.422 A

E. K. MOORE
588-800 237 Ac.

R. S. Tomblin
538-1340

J. J. Pope
701-1055
4.765 Ac.

J. G. & H. C. Wick
637-1205
4.434 A

N. K. Phillips
597-131
577-245
4.144 Ac.

P. C. Burnett
589-425
2.34 Ac.

491-324
578-837
M. M. & D. J. Russin
13.550 Ac.

M. R. J. Zwolenik
555-797

E. J. Hamen
470-810
10 A

653-706

F. J. Kastigar - 678-964
J. V. Ombien

212-374
663-780
671-724

D. A. J. Heil

A. Loesey et al.

253-370
691-189

M. E. Rogers

M. J. Mihalacki
4

SEE
DETAIL SHEET
10 Q

247-507

SEC.
14

SEC.
15

50 A

70.57 A

70.45 A

532-736

418-995

459-402,404

35

40 A

66.38 Ac.
454-307
F. & M. McKeon

E. F. & E. WEBER
524-266
67.352 Ac.

1.35
S. Ziegler
31.79 Ac.
459-402,404

S. Ziegler
26.24 Ac.
425-84

A. L. - H. K. Obralik

A. & N. W. Niska

J. & S. DreTzel
492-512

673-1306
463-330
A. A. & D. LICHT

245-B
571-1368

6

10 A

5

6

50.23 A

37.914 A

523-725

110.50 A

37.19

T. & E. Stone

EUCLID RIFLE
AND
HUNTING CLUB
647-603

295-397 Euclid Rifle & Hunting Club

N

37.19 Ac.
459-402,404

SCALE 1"=300'

10 A

4

2

30.50 A

2

20 A

26 A

55.50 A

46.50 A

52.69 A

SEC.
17

SEC.
16

J. Yambor Jr. 3-24 3.000 A.
G. Yambor 6-11-199
S. Yambor 5-28-657 3.000 A.
S. J. McDonald III 10-577-26 3 Ac. 603-34

R. M. GAREY
611-879

H. V. BERGER

J. M. WIKONSKI 6-24-308

WHITNEY ROAD

25 A

42.50 A

82 Ac.

3

M. A. GYETKO
19.90 Ac
672-1032

C. B. GYETKO JR.
609-557
20.00 A

14.74 A

35.26 A

22.6-89
255-00
558-1034

A	B	C	D
E	F	G	H
I	J	K	L
M	N	O	P

MONTVILLE TWP
JAN 1983

308

1.25 A

S U D R O A D

G. C. Brown

R. A. Nious 245-591
174 A.

F. C. Nious
587-1208
13 A.

80-176
Egyetko

233-543

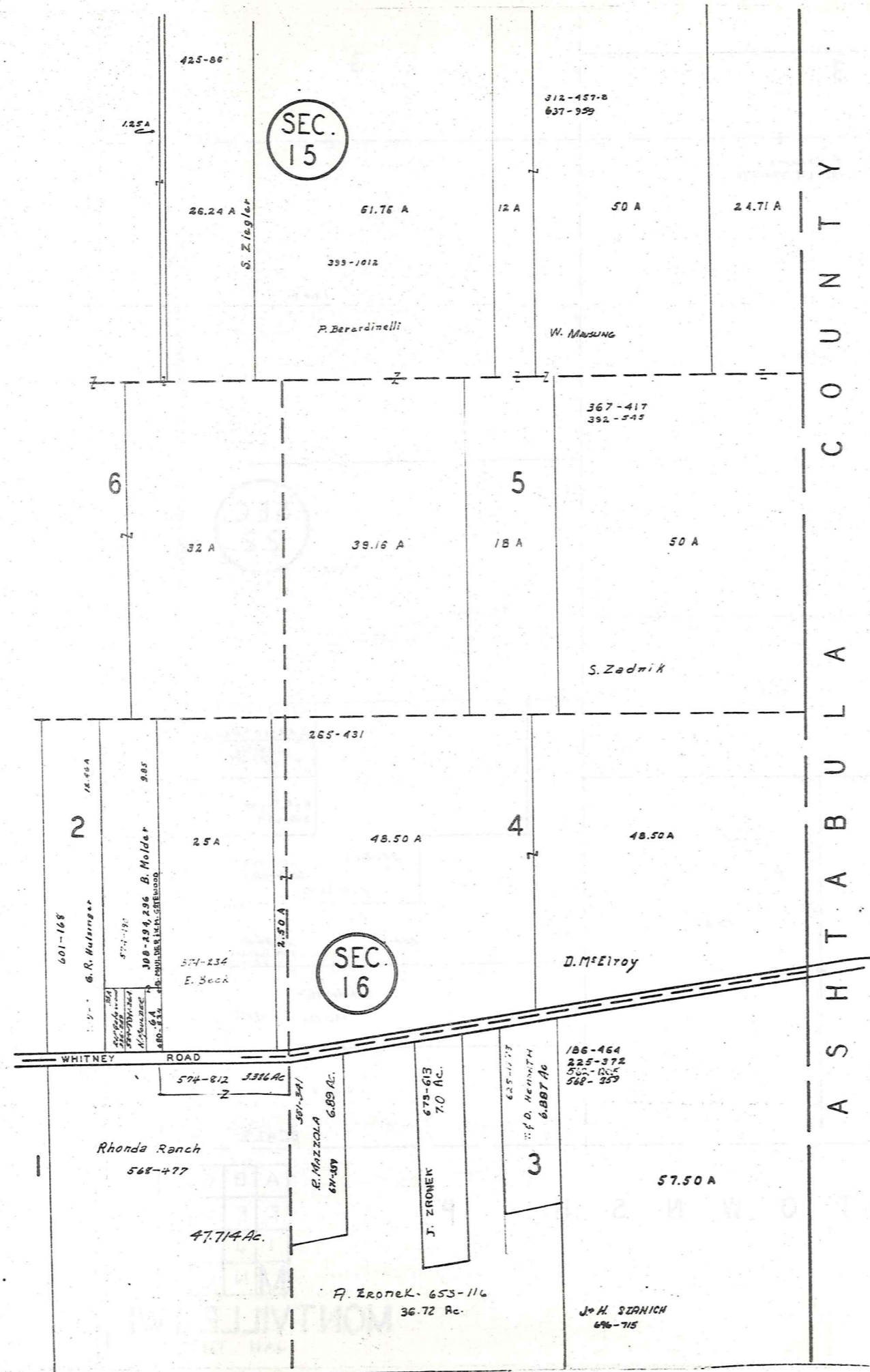
E. Gyetko
657-510

C. L. BEZIEG
613-416

R. C. M. JACKSON
7.44 Ac
604-223

H. FALLON, JR

667-796,797
684-439
L. W. & P. A. KOVACH



C O U N T Y
A S H T A B U L A



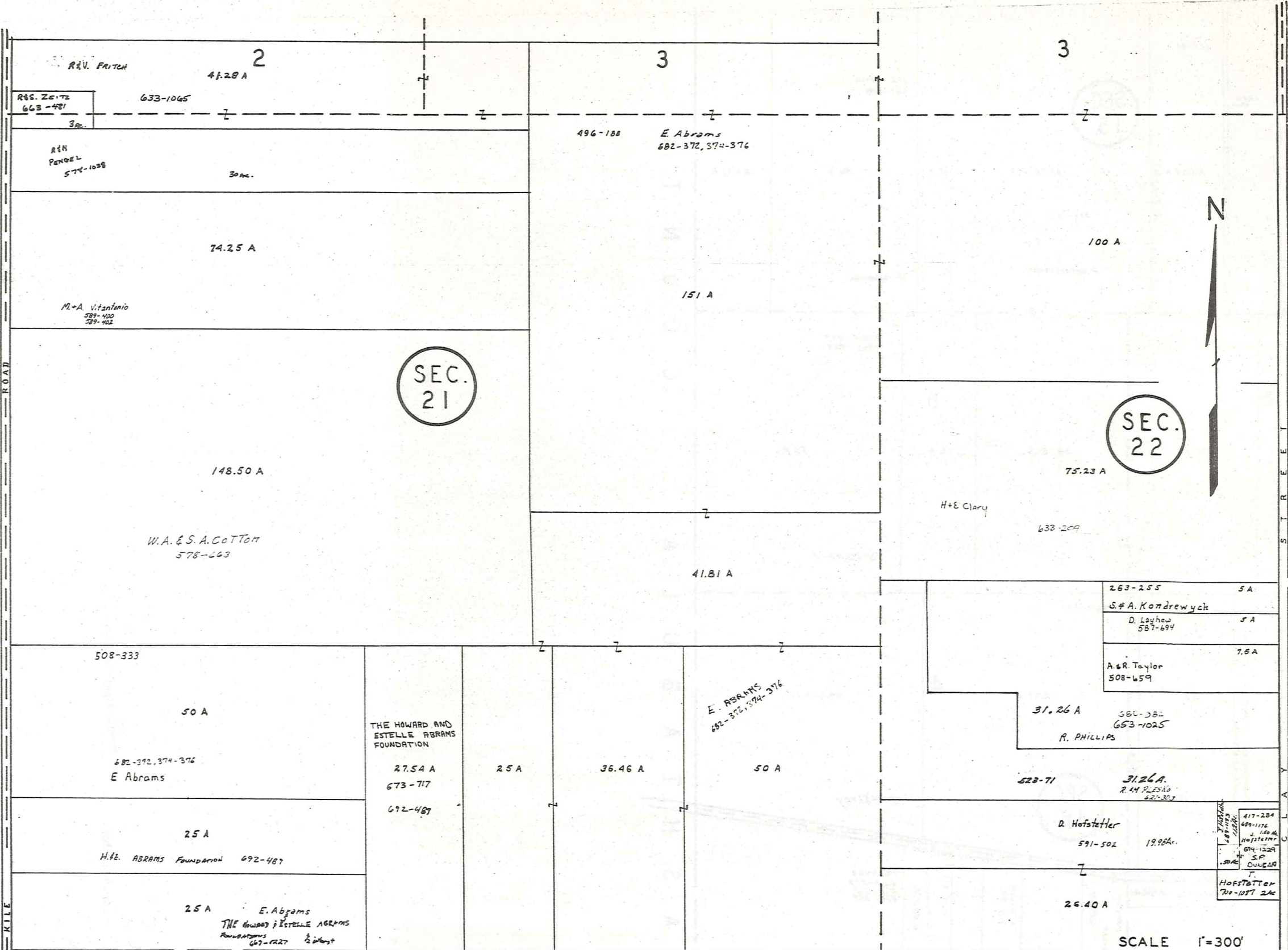
SCALE 1"=300'
JAN 1983

A	B	C	D
E	F	G	H
I	J	K	L
M	N	O	P

MONTVILLE TWP 309

H A M B D E N T O W N S H I P

ROAD



SEC. 21

SEC. 22



SCALE 1"=300'

A	B	C	D
E	F	G	H
I	J	K	L
M	N	O	P

H U N T S B U R G T O W N S H I P

MONTVILLE TWP
JAN 1983

286-194

SEC. 19

259-370

38.22 A

452-981

SEC. 18

46.52 A

M. Rabatin
M. S. SARGE
R. S. D. Armbruster
B. A. Hegeler
G. R. BEITZ
M. M. Bodner
Frank Majewski
R. J. S. Illwell
S. Groghen
D. M. Craig
M. Nopsic
R. M. Conley
G. M. Wulfer
M. A. JAFFE

M. & E. Rogers

T. GIOVINALE
R. J. DIEDRICH

234 A
234 A
234 A
898 A
9 A

580-854

50 A

403-495

50 A

245-205

21.24 A

CARL J. & ANNETTE T. ZEFFARO

T. H. Bell

6

9.215 A
235-55

2

89.75 A

L. M. Rabas

480-548

213-404
359-532
562-226

57.43 A

491-666

316-550

647-259

J. T. & M. K. WARD

J. H. BRACE

30 A

254-491

25.57 A

551-1306

21.84 A

251-532

67 A

59-66

3

108 A
7301 A
335-126

J. K. MORSE

SEC. 23

599-508

460-659

108 A

7301 A

335-126

5

M. Nopsic

580-1901

113 A
93 A

430-172

403-38

H. Davis III

443-358

580-1901

113 A

20 A

466-921

11.63 A

455-574

580-1901

113 A

20 A

K. Heald

574-1300

512-344

580-1901

113 A

20 A

K. Stone

574-1300

551-668

580-1901

113 A

20 A

K. Stone

574-1300

3937 A

580-1901

113 A

20 A

K. Stone

574-1300

J. H. Kleppel

580-1901

113 A

20 A

K. Stone

574-1300

571-445

580-1901

113 A

20 A

K. Stone

574-1300

W. P. Haney

580-1901

113 A

20 A

K. Stone

574-1300

571-445

580-1901

113 A

20 A

K. Stone

574-1300

571-445

580-1901

113 A

20 A

K. Stone

574-1300

571-445

580-1901

113 A

20 A

K. Stone

574-1300

571-445

580-1901

113 A

20 A

K. Stone

574-1300

571-445

580-1901

113 A

20 A

K. Stone

574-1300

571-445

580-1901

113 A

20 A

K. Stone

574-1300

571-445

580-1901

113 A

20 A

K. Stone

574-1300

571-445

580-1901

113 A

20 A

K. Stone

574-1300

571-445

580-1901

113 A

20 A

K. Stone

574-1300

571-445

580-1901

113 A

20 A

K. Stone

574-1300

571-445

580-1901

113 A

20 A

K. Stone

574-1300

571-445

580-1901

113 A

20 A

K. Stone

574-1300

571-445

580-1901

113 A

20 A

K. Stone

574-1300

571-445

580-1901

113 A

20 A

K. Stone

574-1300

571-445

580-1901

113 A

20 A

K. Stone

574-1300

571-445

580-1901

113 A

20 A

K. Stone

574-1300

571-445

580-1901

113 A

20 A

K. Stone

574-1300

571-445

580-1901

113 A

20 A

K. Stone

574-1300

571-445

580-1901

113 A

20 A

K. Stone

574-1300

571-445

580-1901

113 A

20 A

K. Stone

574-1300

571-445

580-1901

113 A

20 A

K. Stone

574-1300

571-445

580-1901

113 A

20 A

K. Stone

574-1300

571-445

580-1901

113 A

20 A

K. Stone

574-1300

571-445

580-1901

113 A

20 A

K. Stone

574-1300

571-445

580-1901

113 A

20 A

K. Stone

574-1300

571-445

580-1901

113 A

20 A

K. Stone

574-1300

571-445

580-1901

113 A

20 A

K. Stone

574-1300

571-445

580-1901

113 A

20 A

K. Stone

574-1300

571-445

580-1901

113 A

20 A

K. Stone

574-1300

571-445

580-1901

113 A

20 A

K. Stone

574-1300

571-445

580-1901

113 A

20 A

K. Stone

574-1300

571-445

580-1901

113 A

20 A

K. Stone

574-1300

571-445

580-1901

113 A

20 A

K. Stone

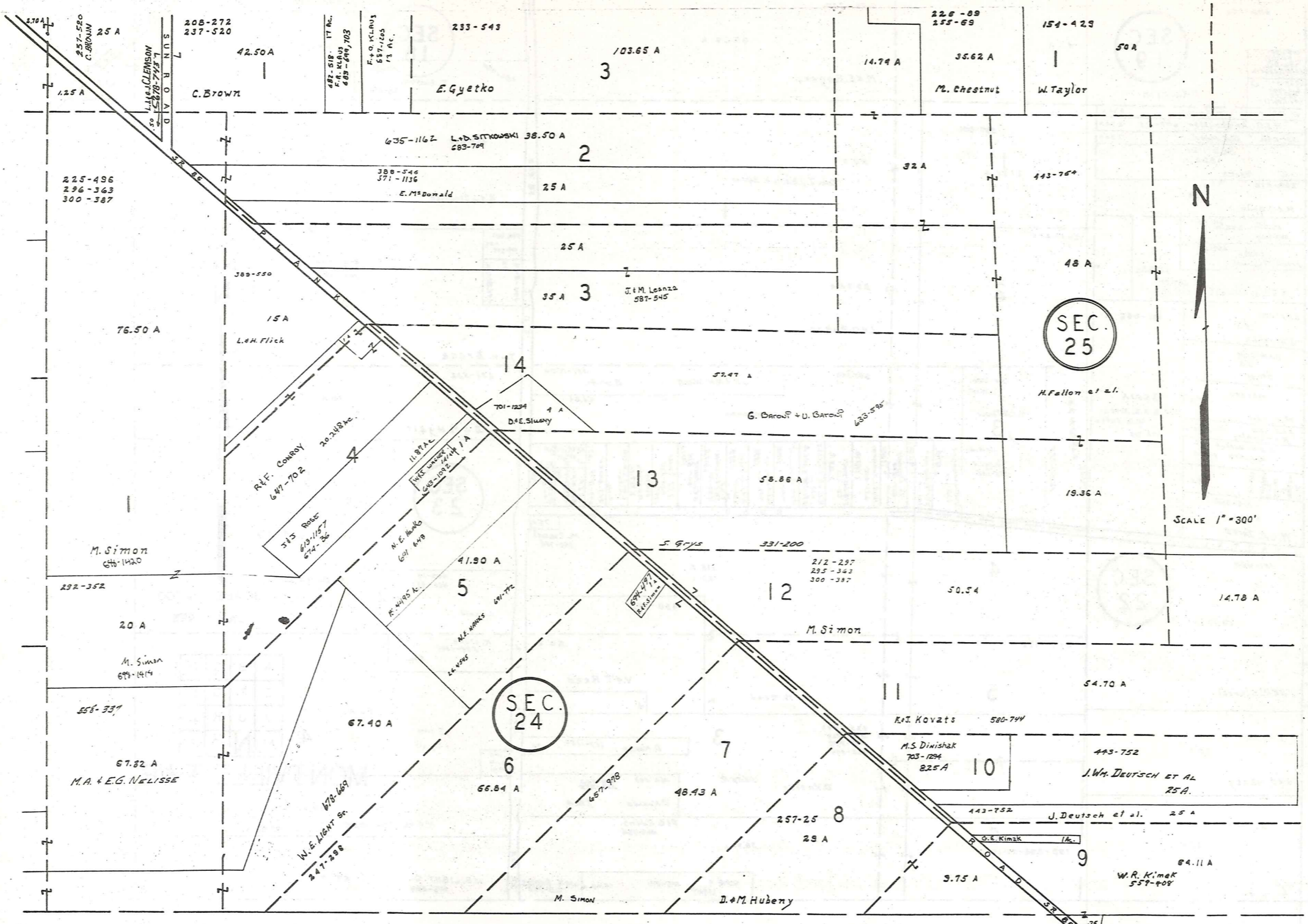
574-1300

571-445

580-1901

113 A

20 A

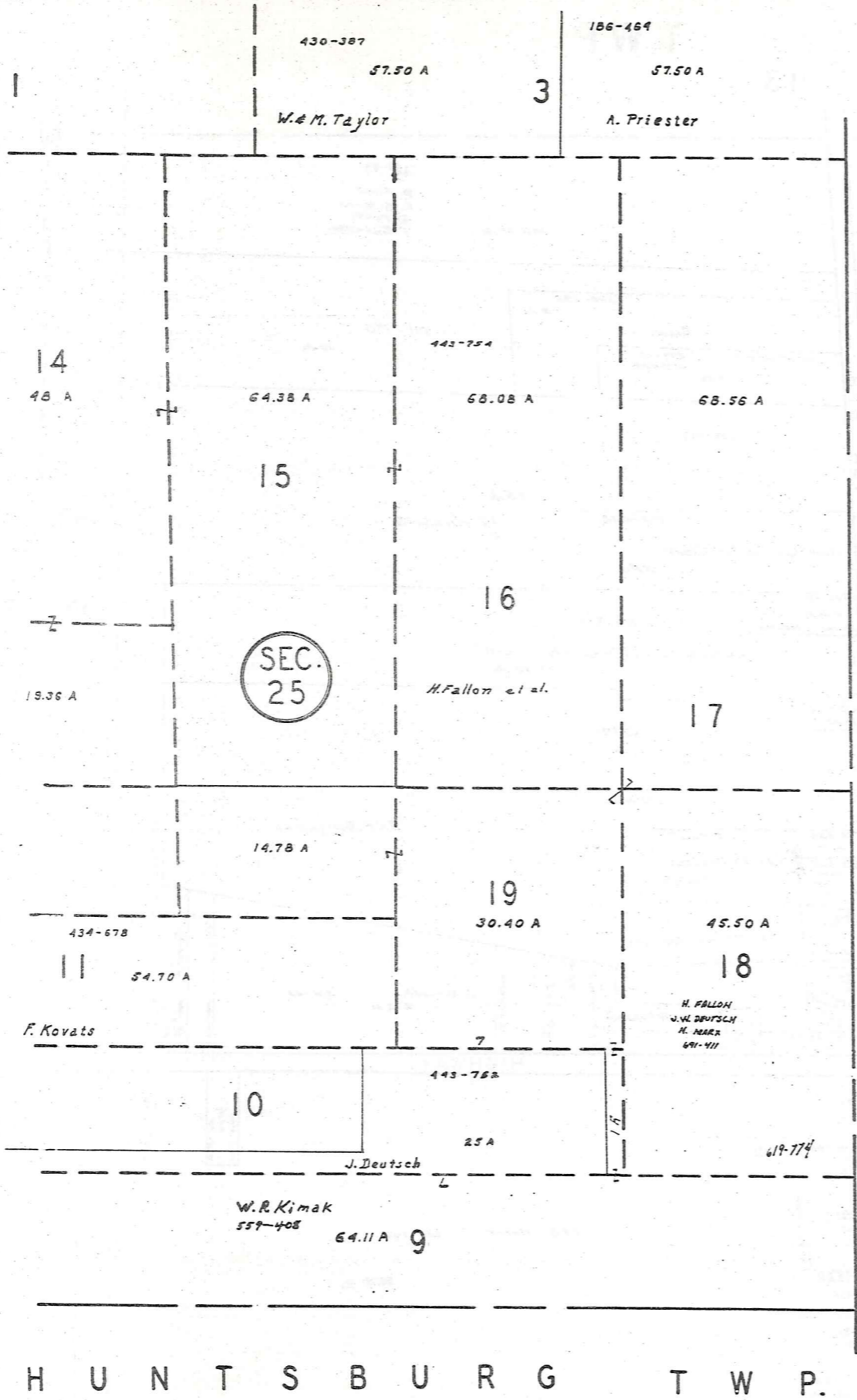


H U N T S B U R G T O W N S H I P

SCALE 1" = 300'
JAN 1983

A	B	C	D
E	F	G	H
I	J	K	L
M	N	O	P

MONTVILLE TWP.



A
S
H
T
A
B
U
L
A
C
O
U
N
T
Y

H
U
N
T
S
B
U
R
G
T
W
P.



SCALE 1" = 300'
JAN 1983

A	B	C	D
E	F	G	H
I	J	K	L
M	N	O	P

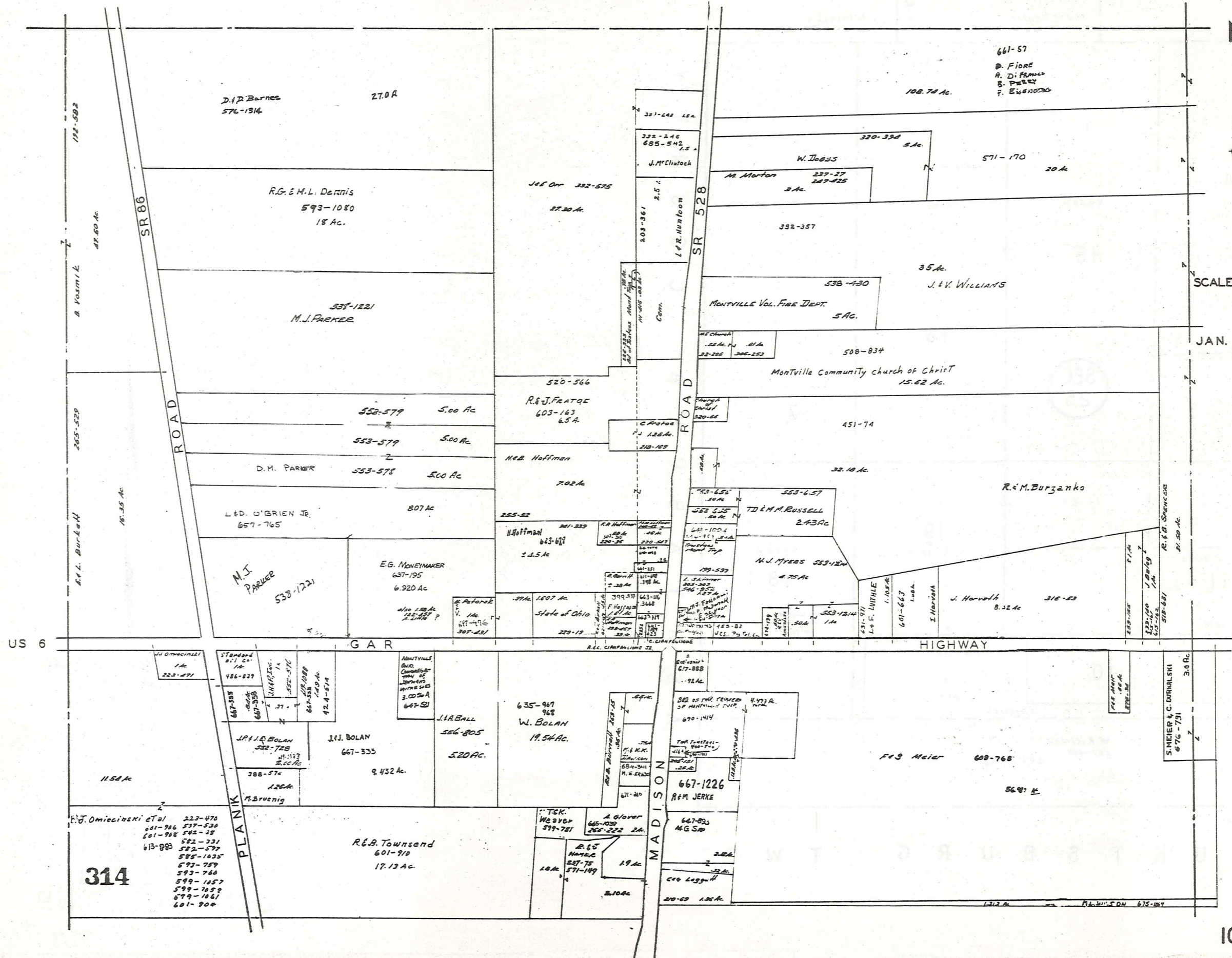
MONTVILLE TWP.
313

MONTVILLE TWP
SECTION 13



SCALE 1" = 200'

JAN. 1, 1983

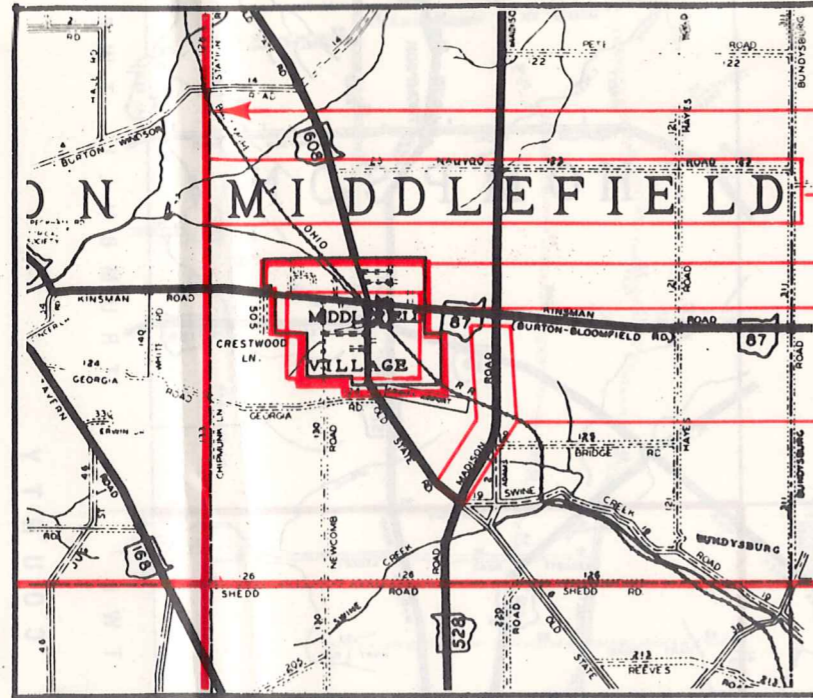


314

10-Q

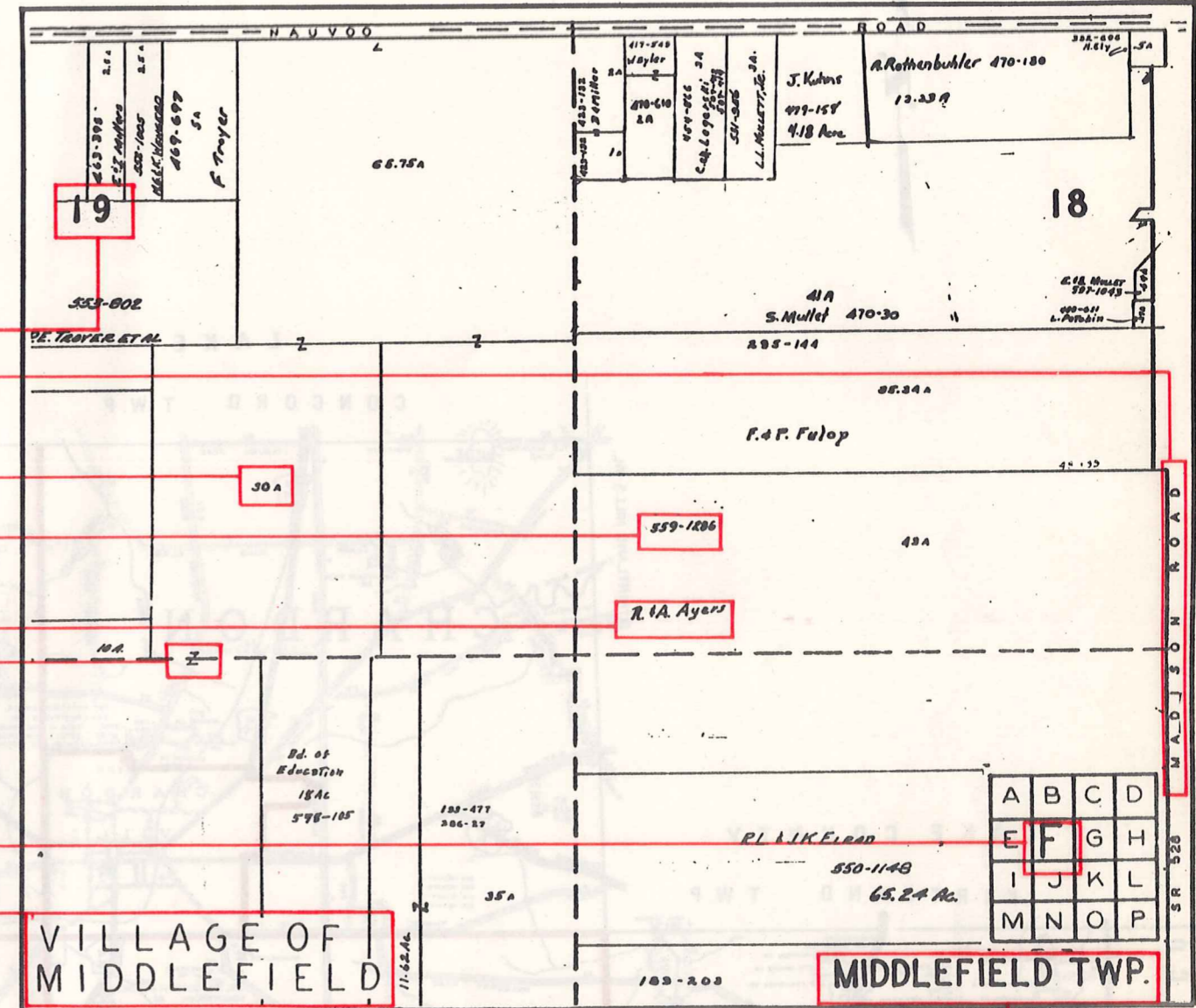
Explanation and Use Sheet for Geauga County, Ohio

SAMPLE (PARTIAL) COUNTY INDEX MAP



- Township Boundary
- Township Name
- Village Boundary
- Village Name
- Tract Lot Number
- Street Name
- Acreage
- Deed Book & Page
- Owners Name
- Denotes Continous Ownership

SAMPLE (PARTIAL) MAP PAGE



- Map Page Number
- Village Name
- Village Boundary
- Township Name

SAMPLE (PARTIAL) MUNICIPALITY INDEX MAP



- Street Name
- Village Name
- Township Name

USE OF THE MAP VOLUME

1. LOCATE THE GENERAL AREA OF INTEREST ON THE COUNTY INDEX MAP, ATLAS PAGE 'B', AND NOTE THE MUNICIPALITY NAME (TOWNSHIP OR VILLAGE).
2. REFER TO THE TABLE OF CONTENTS, ATLAS PAGE 'C', AND NOTE THE BEGINNING ATLAS PAGE NUMBER FOR THE MUNICIPALITY OF INTEREST.
3. TURN TO THE PAGE INDICATED. ON THIS PAGE WILL APPEAR AN INDEX MAP FOR THAT MUNICIPALITY.
4. LOCATE THE GENERAL AREA OF INTEREST AND NOTE THE MAP PAGE NUMBER. THIS MAY BE EITHER A LETTER OR A NUMBER.
5. MAP PAGES ARE IN ALPHABETICAL (OR NUMERICAL) SEQUENCE FOLLOWING THE MUNICIPALITY INDEX MAP. FOLLOW SEQUENCE TO THE MAP PAGE INDICATED.
6. LOCATE SPECIFIC PARCEL OF INTEREST AND NOTE THE DESIRED INFORMATION.

NOTE: ON SOME MAPS YOU MAY BE REFERRED TO A DETAIL SHEET SHOWING AN ENLARGEMENT OF THE AREA. THESE MAPS ARE FOUND AT THE END OF THE REGULAR MAP PAGES IN EACH MUNICIPALITY IN EITHER ALPHABETICAL OR NUMERICAL SEQUENCE.

NOTE: CHARDON VILLAGE HAS TITLE SHEETS. TO LOCATE OWNERS NAME, NOTE THE PARCEL NUMBER, REFER TO THE TITLE PAGE FOLLOWING THE MAP OF INTEREST, FOLLOW NUMERICAL SEQUENCE TO THE PARCEL NUMBER OF INTEREST AND NOTE THE DESIRED INFORMATION. IN ALL OTHER MUNICIPALITIES THE OWNERS NAME APPEARS ON THE MAP PAGE.

This book is the property of REAL ESTATE DATA, INC. and is distributed by REDI under a leasing arrangement requiring return to REDI upon termination of the lease. REDI reserves the right to reclaim this book if found in the possession of any firm or person where possession was obtained through any unauthorized source.